



BioFire® Respiratory 2.1 *plus* Panel

1 Test, 23 Targets, 45 Minutes.

VIRUSES

Adenovirus
Coronavirus 229E
Coronavirus HKU1
Coronavirus NL63
Coronavirus OC43
Middle East Respiratory
Syndrome Coronavirus (MERS-CoV)
Severe Acute Respiratory Syndrome
Coronavirus 2 (SARS-CoV-2)
Human Metapneumovirus
Human Rhinovirus/Enterovirus
Influenza A
Influenza A/H1
Influenza A/H3
Influenza A/H1-2009
Influenza B
Parainfluenza Virus 1
Parainfluenza Virus 2
Parainfluenza Virus 3
Parainfluenza Virus 4
Respiratory Syncytial Virus

BACTERIA

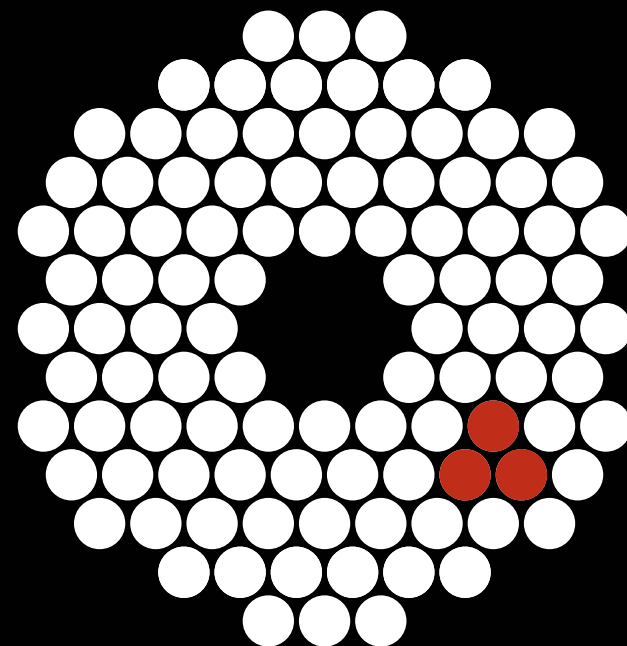
Bordetella pertussis
Bordetella parapertussis
Chlamydia pneumoniae
Mycoplasma pneumoniae

Sample Type: nasopharyngeal swab in transport media

Overall 97.4% Sensitivity | 99.4% Specificity⁴

CE-marked

DON'T GUESS. KNOW.



Is It COVID-19? The Flu? Or Something Else?

Now available: the BioFire® Respiratory 2.1 *plus*
(RP2.1 *plus*) Panel with SARS-CoV-2 detection

1. The COVID Tracking Project. The Atlantic. Available from: <https://covidtracking.com/data>.
2. BioFire® Syndromic Trends.
3. Martinez, *et al.* Geisinger Health System (CVS poster, May 2016).
4. The stated performance is the aggregate of the prospective data in the BioFire® FilmArray® Respiratory 2.1 *plus* clinical study.

Product availability varies by country. Consult your bioMérieux representative.

bioMérieux S.A.
69280 Marcy l'Etoile
France
Tel.: +33 (0) 4 78 87 20 00
Fax: +33 (0) 4 78 87 20 90
www.biomerieux.com

Manufactured by:
BioFire Diagnostics, LLC
515 Colorow Drive
Salt Lake City, UT 84108, USA
BioFire is wholly owned by bioMérieux.
www.biofiredx.com



BIO FIRE®

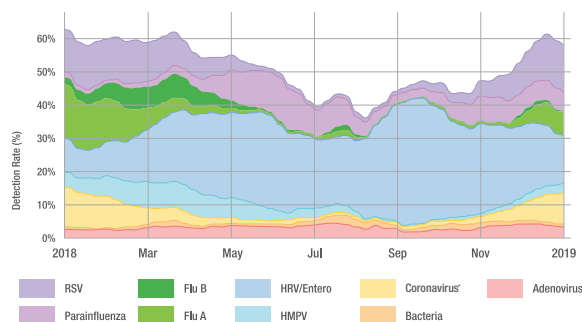


BIO FIRE®

The Syndromic Approach: More Important than Ever

SARS-CoV-2 is a top concern for patients and clinicians, but several pathogens can cause nearly indistinguishable respiratory symptoms. BioFire's syndromic approach combines a broad grouping of probable pathogens into a single, rapid test. With the BioFire® Respiratory 2.1 *plus* (RP2.1 *plus*) Panel, all it takes is one test and just 45 minutes to identify 23 respiratory pathogens, including SARS-CoV-2.

What Are You Missing With Targeted Testing?

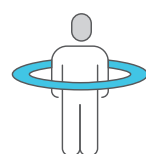


Less than 10% of all COVID-19 tests in the US have been positive.¹ And influenza accounts for less than one-third of detected respiratory pathogens, even during peak “flu season.”² A comprehensive panel that includes viruses and bacteria can help deliver fast answers and fewer missed detections.

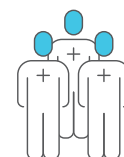
Rapid Results for Quick Decisions



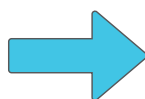
Triaging



Isolations



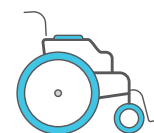
Cohorting



Admissions



Treatment



Discharges

The BioFire RP2.1 *plus* Panel

The newest respiratory solution from BioFire runs on the BioFire® FilmArray® 2.0 and the BioFire® FilmArray® Torch Systems and includes:

- 19 viruses, including SARS-CoV-2, influenza A, influenza B, and respiratory syncytial virus
- 4 bacteria, including *Bordetella pertussis* and *Bordetella parapertussis*

BioFire's Syndromic Testing Has Been Shown To:



Improve antimicrobial therapy

1.9-day reduction in the mean duration of antibiotic treatment³



Shorten patient stays

3-day reduction in adult intensive care unit stay³



Decrease costs

\$8,000 saved per adult patient in intensive care units³

**Syndromic Testing:
The Right Test, The First Time.**